

MALLARD 



Length 50-65 cm, Mass .7-1.6 kg

Diet
seeds, insects, frogs, small fish, and fish eggs

Habitat
salt and freshwater wetlands including rivers, lakes, and ponds

Predators
raccoons, skunks, hawks, ravens, and snakes.

©2021 Lesson Destinations

NORTHERN SHOVELER 



Length 44-51 cm, Mass .8 kg

Diet
minnows, insects, insect larvae, crustaceans, mollusks, aquatic plants, and seeds

Habitat
salt and freshwater wetlands including rivers, lakes, and ponds

Predators
foxes, raccoons, hawks, skunks, coyotes, and ravens

©2021 Lesson Destinations

AMERICAN COOT 





Length 44-51 cm, Mass .8 kg


Diet
fish, tadpoles, insects, crustaceans, mollusks, and leaves

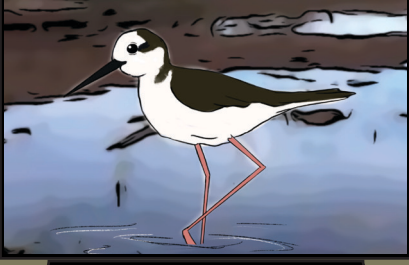
Habitat
freshwater wetlands such as ponds and marshes

Predators
foxes, raccoons, hawks, skunks, coyotes, and ravens

©2021 Lesson Destinations

BLACK NECK STILT 






Length 35-39 cm, Mass 150-170 g

Diet
aquatic invertebrates, small fish, tadpoles, and seeds of aquatic plants

Habitat
salt and fresh shallow water such as mudflats, salt pans, marshes, and flooded fields

Predators
foxes, skunks, coyotes, and hawks.

©2021 Lesson Destinations

BLACK CHINNED HUMMINGBIRD 



Length 9 cm, Mass 2.3-4.5 g

Diet
nectar, spiders, and small insects

Habitat
riparians, nesting in salt-cedar, gray oak, willow, sycamore, cottonwood, and sugarberry trees

Predators
fish, frogs, snakes, lizards, cats, squirrels, ravens, crows, hawks, spiders, bees, and wasps

©2021 Lesson Destinations

CRISSAL THRASHER 



Length 30 cm, Mass 53-70 g

Diet
grasshoppers, beetles, ants, caterpillars, spiders, scorpions, centipedes, small lizards, seeds, and berries

Habitat
low scrubby vegetation such as desert and foothill scrub, and riparian brush

Predators
snakes and roadrunners

©2021 Lesson Destinations

CHIHUAHUAN RAVEN 



Length 46-53 cm, Mass 442-667 g

Diet
large insects like grasshoppers and beetles, amphibians, reptiles, small mammals, bird eggs, young birds, grains, and fruit

Habitat
grasslands and deserts with yucca and small trees like mesquite

Predators
peregrine falcons, great horned owls, eagles, and hawks

©2021 Lesson Destinations

MOURNING DOVE 



Length 31 cm, Mass 112-170 g

Diet
seeds and grasses such as sunflowers, pigweed, and ragweed

Habitat
found all over the US especially in the southwest region

Predators
hawks, owls, blue jays, starlings, crows, snakes, squirrels, and humans

©2021 Lesson Destinations

GAMBEL'S QUAIL 



Length 25 cm, Mass 160-200 g

Diet
the leaves, buds, flowers, sprouts, and fruit of wolfberry, desert willow, tarbush, Apache plume, prickly pear cacti, and mesquite

Habitat
woody thickets near riparian areas as well as desert scrub land, canyon, and brushy, open county

Predators
hawks, bobcats, skunks, coyotes, snakes, and ground squirrels

©2021 Lesson Destinations

HOUSE FINCH



Length 13-14 cm, Mass 16-27 g

Diet

the seeds, buds, and fruit of plants like mulberry trees, poison oaks, and cacti

Habitat

both deserts and desert grasslands, chaparrals, oak savannas, and open coniferous forests

Predators

hawks, ravens, grackles, crows, squirrels, rats, skunks, snakes, and raccoons



GREAT BLUE HERON



Length 91-137 cm, Mass 2.09 kg

Diet

crabs, shrimp, small fish, aquatic insects, small mammals, reptiles, amphibians, and small birds like ducklings

Habitat

salt and freshwater areas such as marshes, mangrove swamps, flooded meadows, lake edges, and shorelines

Predators

Harris's hawk and bald eagle



GREAT EGRET



Length 80-104 cm, Mass 7-1.5 kg

Diet

crabs, shrimp, small fish, aquatic insects, small mammals, reptiles, amphibians, and small birds like ducklings

Habitat

salt and freshwater areas such as marshes, mangrove swamps, flooded meadows, lake edges, and shorelines

Predators

Harris's hawk and bald eagle



GREATER ROADRUNNER



Length 52-54 cm, Mass 221-538 g

Diet

horned lizard, small rattlesnakes, tarantulas, scorpions, centipedes, mice, ground squirrels, baby quails, sparrows, bats, hummingbirds, snails, cactus fruit, and seeds

Habitat

bushland such as desert scrub, chaparrals, savannas, as well as woodlands and wooded stream corridors

Predators

raccoons, hawks, and coyotes



NORTHERN HARRIER



Length 46-50 cm, Mass 300-750 g

Diet

rodents as small as mice or as large as hares, songbirds like doves and small ducks, grasshoppers, snakes, lizards, toads, and frogs

Habitat

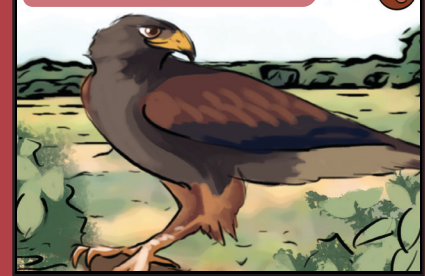
found in undisturbed tracks of wetlands and grasslands

Predators

coyotes, striped skunks, raccoons, and red foxes



HARRIS'S HAWK



Length 46-59 cm, Mass 515-880 g

Diet

rabbits, ground squirrels, kangaroo rats, woodpeckers, large lizards, insects, and large, dead animals

Habitat

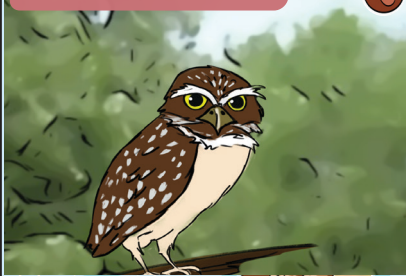
Mesquite brushlands and along rivers

Predators

bobcats and coyotes



BURROWING OWL



Length 19-25 cm, Mass 150 g

Diet

insects such as grasshoppers, beetles, dragonflies, and worms, rodents such as mice, squirrels, and young rabbits, reptiles like snakes, lizards, and turtles, toads and frogs, and birds such as ducklings

Habitat

open, treeless areas such as grasslands and deserts

Predators

snakes, hawks, badgers, skunks, foxes and weasels



JACKRABBIT



Length 61 cm, Mass 1.81-2.7 kg

Diet

alfalfa, cacti, clover, mesquite, and dry, woody vegetation

Habitat

desert scrubland, prairies, meadows, and farmlands

Predators

mountain lions, bobcats, coyotes, foxes, eagles, hawks, owls, and snakes



COTTON TAIL RABBIT



Length 36-42 cm, Mass 700-1.2 kg

Diet

grasses, prickly pear cacti, mesquite leaves and beans

Habitat

desert grasslands, juniper forests, and riparian wetlands

Predators

coyotes, bobcats, foxes, hawks, and large snakes



©2021 Lesson Destinations

©2021 Lesson Destinations

©2021 Lesson Destinations

©2021 Lesson Destinations

©2021 Lesson Destinations

©2021 Lesson Destinations

©2021 Lesson Destinations

©2021 Lesson Destinations

©2021 Lesson Destinations

RIO BOSQUE

Web Deck

©2021 Lesson Destinations

RIO BOSQUE

Web Deck

©2021 Lesson Destinations

RIO BOSQUE

Web Deck

©2021 Lesson Destinations

RIO BOSQUE

Web Deck

©2021 Lesson Destinations

RIO BOSQUE

Web Deck

©2021 Lesson Destinations

RIO BOSQUE

Web Deck

©2021 Lesson Destinations

RIO BOSQUE

Web Deck

©2021 Lesson Destinations

RIO BOSQUE

Web Deck

©2021 Lesson Destinations

RIO BOSQUE

Web Deck

©2021 Lesson Destinations

BEAVER



Length 74-90 cm, Mass 17-32 kg


Diet
leaves, twigs, and bark of trees including willows, mesquite, cottonwoods, junipers, and pecans, grasses, and water plants like cattails and water lilies

Habitat
wooded areas along ponds, lakes, rivers, marshes, and streams

Predators
foxes, coyotes, mountain lions, and bobcats

©2021 Lesson Destinations

KANGAROO RAT



Length 21-36 cm, Mass 55-96 g

Diet
mesquite beans and desert grass seeds

Habitat
open areas with sandy soils and some brush

Predators
owls, snakes, bobcats, coyotes, and foxes

©2021 Lesson Destinations

COLLARED PECCARY



Length 88 cm, Mass 16-27 kg

Diet
fruit, nuts, berries, agave and prickly pear cacti, grass, roots, fungi, bulbs, insects, reptiles, and amphibians

Habitat
brushy deserts and rocky canyons near water sources

Predators
cougars, Mexican wolves, coyotes, and bobcats

©2021 Lesson Destinations

BOTTA'S POCKET GOPHER



Length 18-27 cm, Mass 160-250 g

Diet
shoots, grasses, roots, tubers, bulbs, and seedlings of almost any plant

Habitat
cottonwood woodlands

Predators
coyotes, snakes, bobcats, skunks, and hawks

©2021 Lesson Destinations

MUSKRAT



Length 60 cm, Mass 1.8 kg

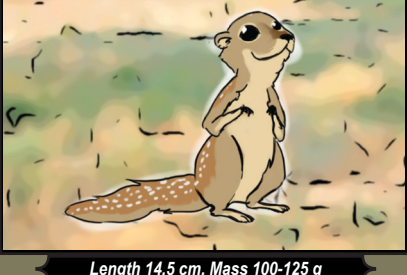
Diet
the roots, leaves, stems, and fruit of aquatic plants like southern cattails as well as fish, insects, and amphibians

Habitat
along rivers, ponds, and wetlands

Predators
bobcats, coyotes, gray fox, and large hawks

©2021 Lesson Destinations

SPOTTED GROUND SQUIRREL



Length 14.5 cm, Mass 100-125 g

Diet
cacti pulp, mesquite beans, saltbush seeds, sandbar, sunflowers, gourds, irises, grasshoppers, insects, small lizards, and kangaroo rats

Habitat
dry, sandy areas where they can burrow in places such as deserts, scrublands, arid grasslands, and pinewoods

Predators
foxes, raccoons, hawks, skunks, coyotes, burrowing owls, and ravens

©2021 Lesson Destinations

COYOTE



Length 85 cm, Mass 8-20 kg

Diet
raccoons, rabbits, mice, rats, squirrels, raccoons, birds, snakes, lizards, insects, flowers, cacti fruit, and mesquite beans

Habitat
can be found just about anywhere but prefer the open prairie and desert

Predators
wolves, mountain lions, and bears

©2021 Lesson Destinations

GRAY FOX



Length 76-112 cm, Mass 3.6-7 kg

Diet
mice, voles, rabbits, birds, crickets, grasshoppers, berries, grass, and nuts

Habitat
brushlands and wooded areas

Predators
bobcats and coyotes.

©2021 Lesson Destinations

RACCOON



Length 40-70 cm, Mass 5-26 kg

Diet
parts of plants such as fruit, nuts, and berries, smaller rodents, frogs, eggs, insects, and crayfish

Habitat
forested areas near a river or stream, but have adapted to various habitats, especially near humans

Predators
bobcats, cougars, and coyotes

©2021 Lesson Destinations

RIO BOSQUE

Web Deck

©2021 Lesson Destinations

RIO BOSQUE

Web Deck

©2021 Lesson Destinations

RIO BOSQUE

Web Deck

©2021 Lesson Destinations

RIO BOSQUE

Web Deck

©2021 Lesson Destinations

RIO BOSQUE

Web Deck

©2021 Lesson Destinations

RIO BOSQUE

Web Deck

©2021 Lesson Destinations

RIO BOSQUE

Web Deck

©2021 Lesson Destinations

RIO BOSQUE

Web Deck

©2021 Lesson Destinations

RIO BOSQUE

Web Deck

©2021 Lesson Destinations

BOBCAT



Length 47.5-125 cm, Mass 6.4-18.3

Diet
deer, birds, bats, snakes, lizards, and rodents such as rabbits

Habitat
mountains, forests, brushland, and semi-deserts

Predators
coyotes, wolves, foxes, owls, and mountain lions

©2021 Lesson Destinations

YELLOW MUD TURTLE



Length 165 mm, Mass 391 g

Diet
aquatic life such as insects, fish, tadpoles, frogs, crayfish, fairy shrimp, and other invertebrates as well as vegetation like algae, duckweed and decaying plant matter

Habitat
near the shores of muddy or sandy rivers, sloughs, ponds, streams, flooded fields, and marshes

Predators
skunks, raccoons, water snakes, larger turtles, and large fish

©2021 Lesson Destinations

SPINY SOFTSHELL TURTLE



Length 18-48 cm, Mass 130 g

Diet
anything in water that will fit in its mouth including insects, crayfish, and the occasional fish

Habitat
fresh water rivers and streams with muddy or sandy bottoms, as well as lakes and reservoirs

Predators
raccoons, skunks, red foxes, herons, and large fish

©2021 Lesson Destinations

SPOTTED WHIPTAIL LIZARD



Length 24-31.75 cm, Mass 120 mg

Diet
termites, caterpillars, grasshoppers, beetles, ants, other insects, spiders, the leaves and flowers of plants such as dandelions

Habitat
arid and semi-arid grounds with scattered vegetational cover such as in prairies, dunes, and deserts

Predators
larger lizards, snakes, roadrunners, and other predatory birds

©2021 Lesson Destinations

TEXAS HORNED LIZARD



Length 69-144 mm, Mass 25-90 g


Diet
mainly harvester ants as well as other small insects

Habitat
arid and semi-arid grounds with scattered vegetational cover such as in prairies, dunes, and deserts

Predators
canids, snakes, falcons, kestrels, shrikes, hawks, and greater road runners

©2021 Lesson Destinations

DESERT KING SNAKE



Length 1200-1520 cm, Mass 1.4-2.3g

Diet
birds, lizards, turtles, snakes, eggs, and small mammals

Habitat
riparian corridors in grasslands, deserts, woodlands, and low mountains

Predators
roadrunners, hawks, raccoons, badgers, snakes, coyotes, and foxes

©2021 Lesson Destinations

GOPHER SNAKE



Length 91-213 cm, Mass .90-1.81 kg

Diet
small animals such as pocket gophers, mice, rats, and other rodents, lizards, snakes, frogs, and eggs

Habitat
woodlands, deserts, prairies, fields, and shrublands

Predators
hawks, foxes, and coyotes

©2021 Lesson Destinations

WOODHOUSE TOAD



Length 6.4-10.7 cm, Mass 50-100g

Diet
bees, moths, scorpions, spiders, sowbugs, ants, insect larvae, and earthworms

Habitat
wetlands including canyons, marshes, riverbanks, irrigated farmlands, and gardens

Predators
fish, herons, snakes, skunks, and raccoons

©2021 Lesson Destinations

COUCH'S SPADEFoot TOAD



Length 8.9 cm, Mass 50-100 g

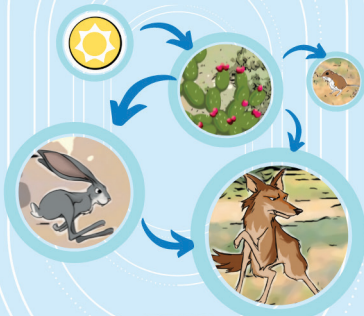
Diet
insects such as termites, beetles, bugs, ants, grasshoppers, and crickets, as well as spiders

Habitat
marshlands, prairies and floodplains

Predators
yellow mud turtles, grackles, and snakes

©2021 Lesson Destinations

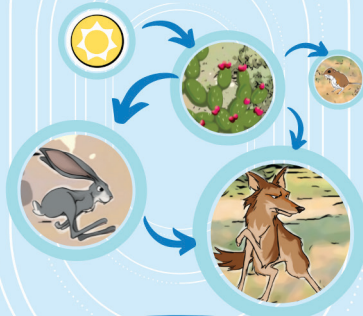
RIO BOSQUE



Web Deck

©2021 Lesson Destinations

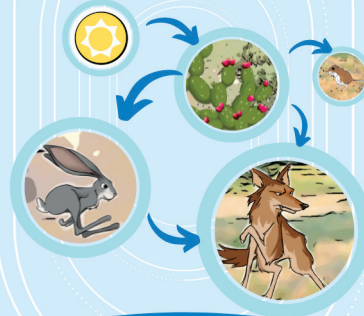
RIO BOSQUE



Web Deck

©2021 Lesson Destinations

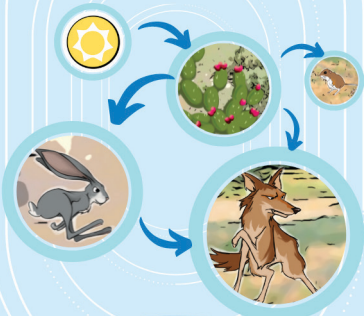
RIO BOSQUE



Web Deck

©2021 Lesson Destinations

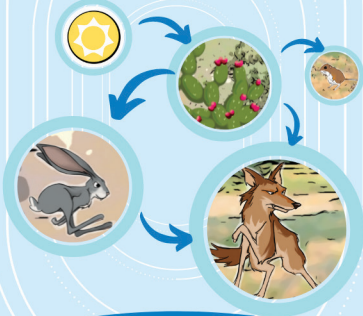
RIO BOSQUE



Web Deck

©2021 Lesson Destinations

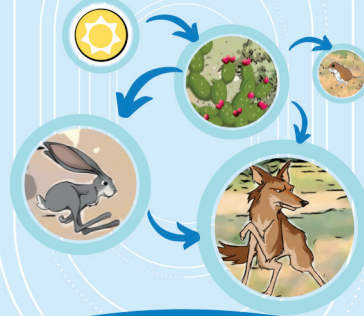
RIO BOSQUE



Web Deck

©2021 Lesson Destinations

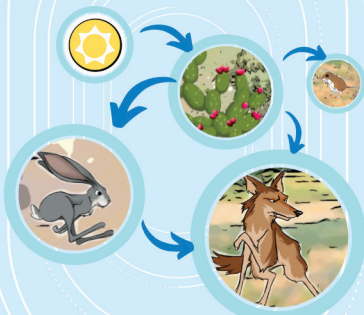
RIO BOSQUE



Web Deck

©2021 Lesson Destinations

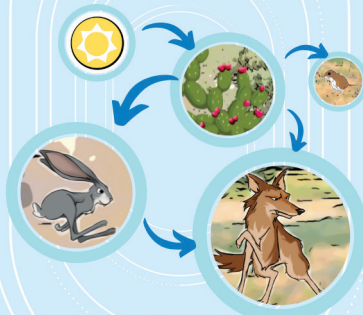
RIO BOSQUE



Web Deck

©2021 Lesson Destinations

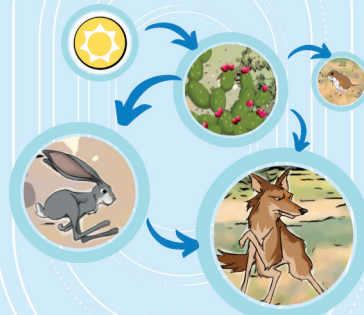
RIO BOSQUE



Web Deck

©2021 Lesson Destinations

RIO BOSQUE



Web Deck

©2021 Lesson Destinations

BULLFROG



Length 20.32 cm, Mass .9-1.36 kg

Diet
worms, insects, snails, crayfish, fish, frogs, tadpoles, aquatic eggs, rodents, birds, and small reptiles like snakes and turtles

Habitat
mostly woodland, but can be found in all types of habitats including deserts

Predators
aquatic insects, crayfish, frogs, aquatic turtles, snakes, fish, birds such as herons and great egrets, and mammals such as raccoons

©2021 Lesson Destinations

CHIHUAHUA DWARF CRAYFISH



Length 5 cm, Mass .05g

Diet
bloodworms, mosquito larvae, algae, leaves, snails, shrimp, and small fish

Habitat
slow-flowing rivers, lakes, and small streams

Predators
large fish, raccoons, and blue herons

©2021 Lesson Destinations

COMMON CARP



Length 85 cm, Mass 8-20 kg

Diet
aquatic plants and seeds, insects, crustaceans, mollusks, and fish eggs

Habitat
stagnant and slow-flowing waterways such as rivers, lakes, and lagoons

Predators
larger fish such as the large mouth bass, and birds like great blue herons

©2021 Lesson Destinations

MOSQUITO FISH



Length 40-70 cm, Mass 5-26 kg


Diet
primarily mosquito larvae, but also small water insects, algae, and detritus material

Habitat
shallow, salt or freshwater slow flowing ponds, lakes, streams, and rivers

Predators
raccoons, egrets, and herons

©2021 Lesson Destinations

HARVESTER ANT



Length 5-7 mm, Mass 6.7-17 mg

Diet
mostly desert grass seeds, and occasionally dead insects

Habitat
open areas, no vegetation 3-6ft from their nest.

Predators
Texas horned lizard, birds, and reptiles.

©2021 Lesson Destinations

DARKLING BEETLE



Length 3cm, Mass 300 mg

Diet
leaves especially those of saltbush and iron blossom

Habitat
desert mountains, scrub, and dunes

Predators
birds such as burrowing owls and crissal thrashers, as well as reptiles, and predators that don't mind the stink

©2021 Lesson Destinations

DIGGER BEE



Length .5-2.5 cm, Mass 10 mg

Diet
pollen and nectar

Habitat
bare soil areas and banks of rivers

Predators
dragonflies, robberflies, wasps, skunks, birds, and spiders

©2021 Lesson Destinations

WESTERN PIGMY



Length 12-20 mm, Mass 3mg

Diet
Larvae: pigweed and saltbushes
Adult: flower nectar

Habitat
salt marshes, deserts, and wastelands

Predators
spiders, mantis, dragonflies, toads, lizards, and birds

©2021 Lesson Destinations

WATER BOATMAN



Length 5-15 mm, Mass 2mg

Diet
aquatic plants, algae, and detritus

Habitat
wetlands such as ponds, waterways, and marshes

Predators
dragonflies, birds, frogs, fish, and spiders

©2021 Lesson Destinations

RIO BOSQUE

Web Deck

©2021 Lesson Destinations

RIO BOSQUE

Web Deck

©2021 Lesson Destinations

RIO BOSQUE

Web Deck

©2021 Lesson Destinations

RIO BOSQUE

Web Deck

©2021 Lesson Destinations

RIO BOSQUE

Web Deck

©2021 Lesson Destinations

RIO BOSQUE

Web Deck

©2021 Lesson Destinations

RIO BOSQUE

Web Deck

©2021 Lesson Destinations

RIO BOSQUE

Web Deck

©2021 Lesson Destinations

RIO BOSQUE

Web Deck

©2021 Lesson Destinations

WATER FLEA



Length 1-5 mm, Mass 1 mg

Diet
algae and other microscopic water particles

Habitat
fresh water sources such as ponds, wetlands, rivers, and lakes

Predators
small fish, frogs, insect larva such as damsel flies, and newts



©2021 Lesson Destinations

MOSQUITO



Length 3-6 mm, Mass 5 mg

Diet
males and females: nectar, plant sap, and honeydew off of insects such as aphids; females: animal blood

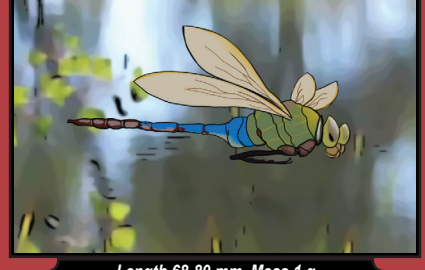
Habitat
any area with standing freshwater ranging from an area as large as a swamp to something as small as a bottle cap

Predators
bats, birds, fish, turtles, dragonflies, mosquitoes, spiders, frogs, and toads



©2021 Lesson Destinations

GREEN DARNER DRAGON FLY



Length 68-80 mm, Mass 1 g

Diet
fairy shrimp, small fish, tadpoles, and insects such as mosquitoes, flies, butterflies, and other dragonflies

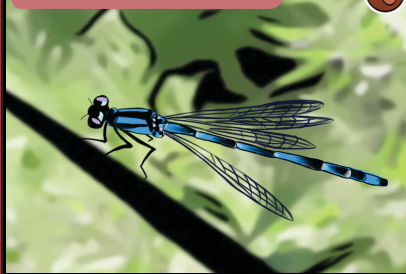
Habitat
riparian corridors in forests, deserts, and grasslands

Predators
tiger salamander larvae, robber flies, birds, spiders, dragonflies, frogs, and fish



©2021 Lesson Destinations

BLUET DAMSELFLY



Length 30-40 mm, Mass 3mg

Diet
aquatic insect eggs and larvae, mayflies, mosquitoes, moths, flies, flying ants, and termites

Habitat
freshwater shallow lakes and ponds

Predators
frogs, birds, spiders, bees, lizards, and carnivorous plants



©2021 Lesson Destinations

WATER STRIDER



Length 2-12 mm, Mass 10mg

Diet
any insect, alive or dead, in water including mosquitoes, dragonflies, and their larvae, as well as tadpoles

Habitat
slow moving fresh water from ponds to mud puddles

Predators
birds, especially water fowl, and fish



©2021 Lesson Destinations

SOUTHERN CATTAIL



Height: 1.5-4m

Plant type
grass

Habitat
wetlands

Consumed by
muskrats, beavers, snails, ducks, coots, and shovelers



©2021 Lesson Destinations

RIO GRANDE COTTONWOOD



Height: 21-30m

Plant type
tree

Habitat
the moist soil along streams and in wetlands

Consumed by
seeds and buds: rodents, grouse, and quail; twigs and leaves: rabbits and deer; bark and wood: beavers and porcupines



©2021 Lesson Destinations

PRICKLY PEAR CACTUS



Height: 1-2.15m

Plant type
cacti

Habitat
desert

Consumed by
jack rabbits, peccaries, deer, squirrels, tortoises, rodents, birds, beetles, and coyotes



©2021 Lesson Destinations

ALGAE



Height: mats can grow several

Plant type
photosynthetic protist

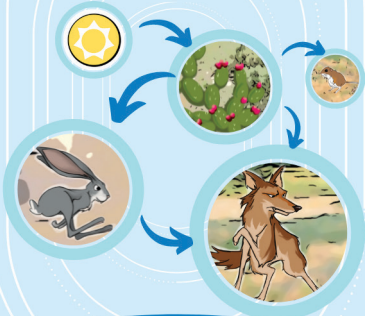
Habitat
nearly any salt or freshwater source from ponds and rivers to swamps and oceans

Consumed by
mosquitofish, carps, crayfish, frogs, waterboatmen, water fleas, waterfowl such as ducks, coots, and shovelers, and mammals such as muskrats, and beavers



©2021 Lesson Destinations

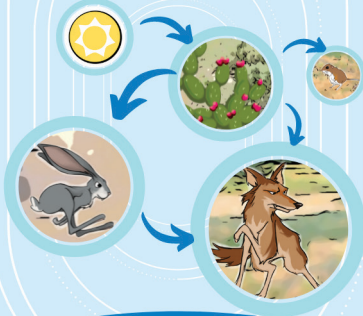
RIO BOSQUE



Web Deck

©2021 Lesson Destinations

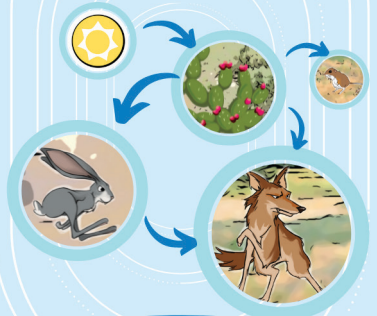
RIO BOSQUE



Web Deck

©2021 Lesson Destinations

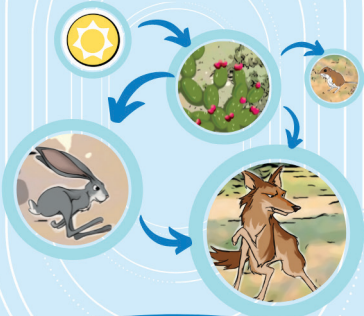
RIO BOSQUE



Web Deck

©2021 Lesson Destinations

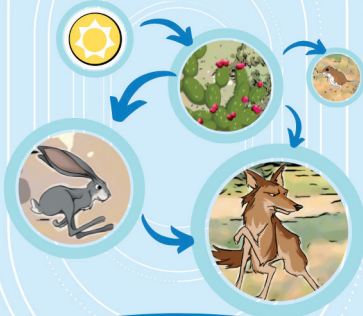
RIO BOSQUE



Web Deck

©2021 Lesson Destinations

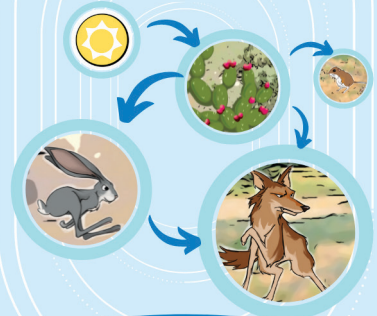
RIO BOSQUE



Web Deck

©2021 Lesson Destinations

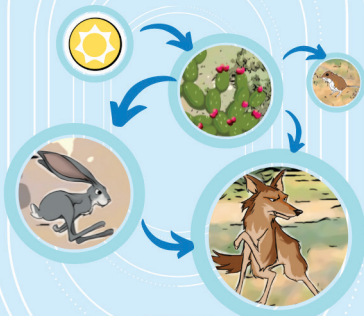
RIO BOSQUE



Web Deck

©2021 Lesson Destinations

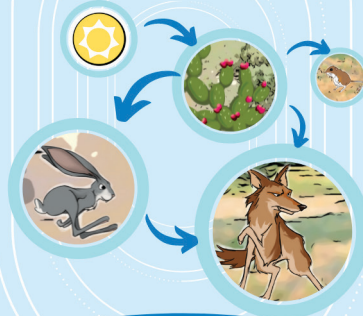
RIO BOSQUE



Web Deck

©2021 Lesson Destinations

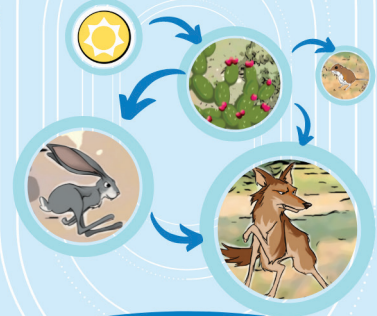
RIO BOSQUE



Web Deck

©2021 Lesson Destinations

RIO BOSQUE



Web Deck

©2021 Lesson Destinations

WOLFBERRY 



Height: 1-2.5m


Plant type
shrub


Habitat
sandy and rocky areas specifically near prickly pear cactus and mesquite trees

Consumed by
birds, rodents, raccoons, foxes, and coyotes

©2021 Lesson Destinations

NEEDLE GRAMA GRASS 







Height: .6-1m


Plant type
grass


Habitat
deserts and plains

Consumed by
insects, birds, rodents, rabbits, and grazers such as deer and cattle

©2021 Lesson Destinations

TORNILLO MESQUITE 







Height: 3-7.6m


Plant type
tree


Habitat
deserts along streams and creeks in sandy and rocky soils

Consumed by
seedpods are eaten by birds, rodents, deer, and coyote

©2021 Lesson Destinations

FOUR WING SALT BUSH 







Height: 1-2.15m


Plant type
shrub

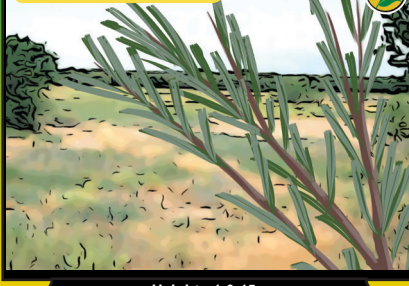
Habitat
rangelands

Consumed by
bees, butterflies, birds, rabbits and other rodents, deer, and cattle

©2021 Lesson Destinations

COYOTE WILLOW 









Height: 1-2.15m


Plant type
shrub


Habitat
riparian habitats such as along the banks of streams, rivers, ponds, and lakes

Consumed by
buds: birds; foliage: rabbits and deer; branches: beavers

©2021 Lesson Destinations

ARROW WEED 








Height: 3m

Plant type
shrub

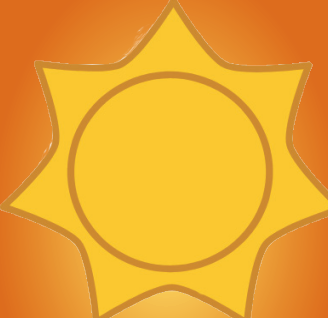
Habitat
riparian desert areas such as floodplains and washes

Consumed by
butterflies, moths, small rodents, and grain eating birds

©2021 Lesson Destinations

SUNLIGHT

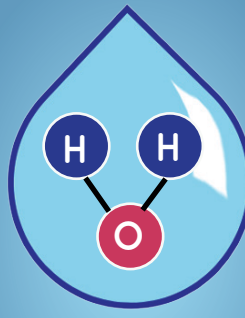


Light Energy

Source: The sun
Info: Our Sun produces light energy, "photons", that travel to the Earth's surface. This provides the light energy necessary to create photosynthesis in plants.

©2021 Lesson Destinations

WATER

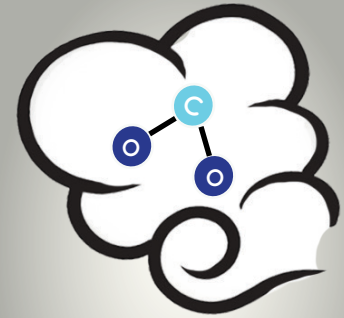


H₂O

Source: 70% of Earth's surface is water
Info: You must have water, H₂O, to complete photosynthesis. Water helps to create the sugars needed in food for plants. Plants can live in water as well as in areas that provide water.

©2021 Lesson Destinations

CARBON DIOXIDE

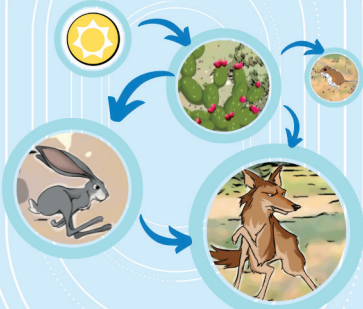


CO₂

Source: Respiration from humans and animals, the burning of fuels (wood, coal, gas, oil), volcanic activity, and cement manufacture
Info: You must have Carbon Dioxide to complete photosynthesis. The carbon provides the matter that will become the bark, stem, leaves, and roots of plants.

©2021 Lesson Destinations

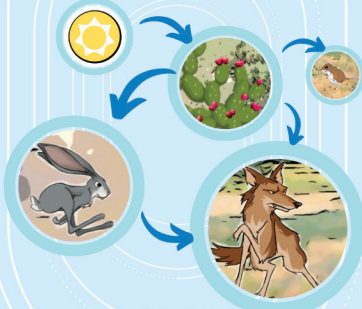
RIO BOSQUE



Web Deck

©2021 Lesson Destinations

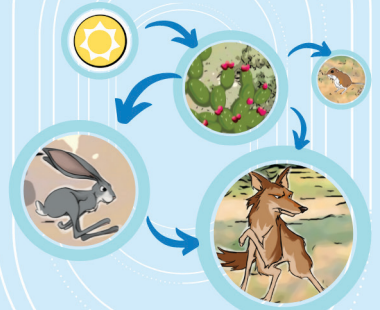
RIO BOSQUE



Web Deck

©2021 Lesson Destinations

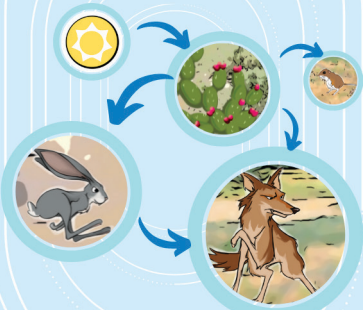
RIO BOSQUE



Web Deck

©2021 Lesson Destinations

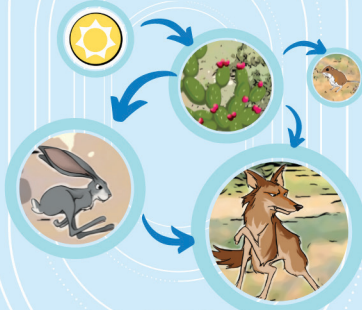
RIO BOSQUE



Web Deck

©2021 Lesson Destinations

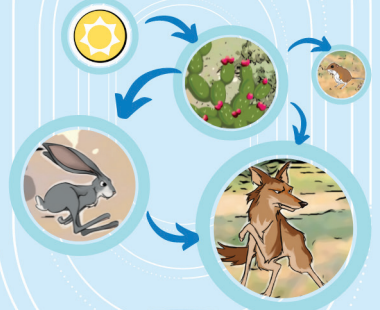
RIO BOSQUE



Web Deck

©2021 Lesson Destinations

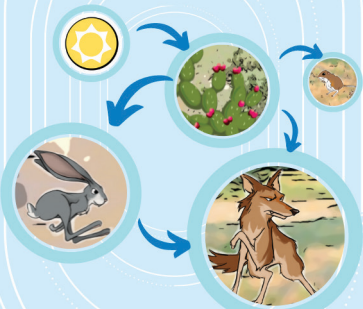
RIO BOSQUE



Web Deck

©2021 Lesson Destinations

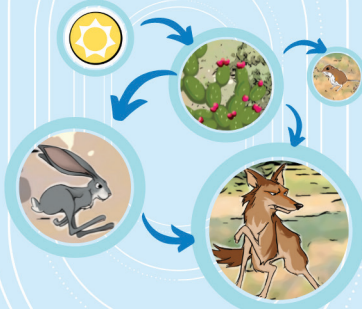
RIO BOSQUE



Web Deck

©2021 Lesson Destinations

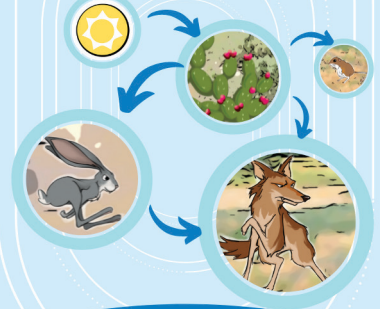
RIO BOSQUE



Web Deck

©2021 Lesson Destinations

RIO BOSQUE



Web Deck

©2021 Lesson Destinations

SUNLIGHT



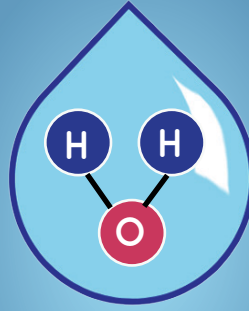
Light Energy

Source: The sun

Info: Our Sun produces light energy, "photons", that travel to the Earth's surface. This provides the light energy necessary to create photosynthesis in plants.

©2021 Lesson Destinations

WATER



H₂O

Source: 70% of Earth's surface is water

Info: You must have water, H₂O, to complete photosynthesis. Water helps to create the sugars needed in food for plants. Plants can live in water as well as in areas that provide water.

©2021 Lesson Destinations

CARBON DIOXIDE



CO₂

Source: Respiration from humans and animals, the burning of fuels (wood, coal, gas, oil), volcanic activity, and cement manufacture

Info: You must have Carbon Dioxide to complete photosynthesis. The carbon provides the matter that will become the bark, stem, leaves, and roots of plants.

©2021 Lesson Destinations

SUNLIGHT



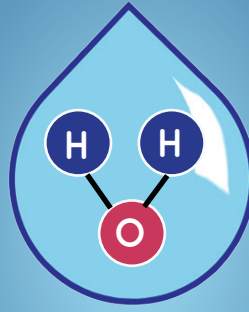
Light Energy

Source: The sun

Info: Our Sun produces light energy, "photons", that travel to the Earth's surface. This provides the light energy necessary to create photosynthesis in plants.

©2021 Lesson Destinations

WATER



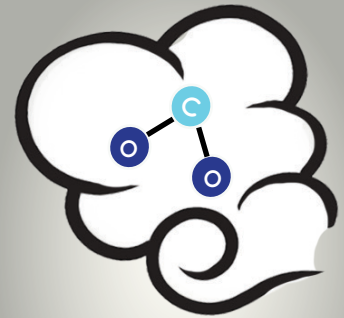
H₂O

Source: 70% of Earth's surface is water

Info: You must have water, H₂O, to complete photosynthesis. Water helps to create the sugars needed in food for plants. Plants can live in water as well as in areas that provide water.

©2021 Lesson Destinations

CARBON DIOXIDE



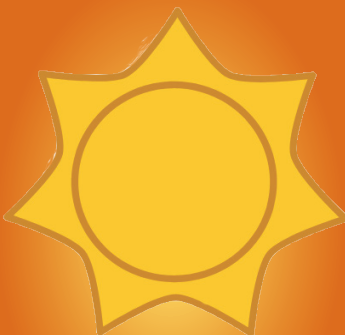
CO₂

Source: Respiration from humans and animals, the burning of fuels (wood, coal, gas, oil), volcanic activity, and cement manufacture

Info: You must have Carbon Dioxide to complete photosynthesis. The carbon provides the matter that will become the bark, stem, leaves, and roots of plants.

©2021 Lesson Destinations

SUNLIGHT



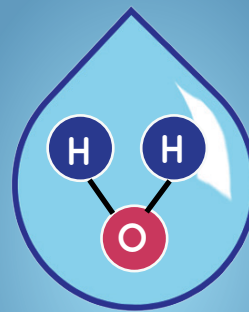
Light Energy

Source: The sun

Info: Our Sun produces light energy, "photons", that travel to the Earth's surface. This provides the light energy necessary to create photosynthesis in plants.

©2021 Lesson Destinations

WATER



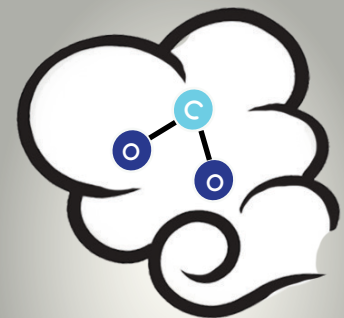
H₂O

Source: 70% of Earth's surface is water

Info: You must have water, H₂O, to complete photosynthesis. Water helps to create the sugars needed in food for plants. Plants can live in water as well as in areas that provide water.

©2021 Lesson Destinations

CARBON DIOXIDE



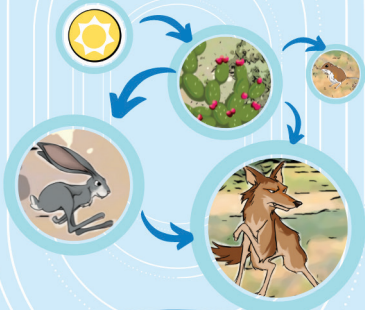
CO₂

Source: Respiration from humans and animals, the burning of fuels (wood, coal, gas, oil), volcanic activity, and cement manufacture

Info: You must have Carbon Dioxide to complete photosynthesis. The carbon provides the matter that will become the bark, stem, leaves, and roots of plants.

©2021 Lesson Destinations

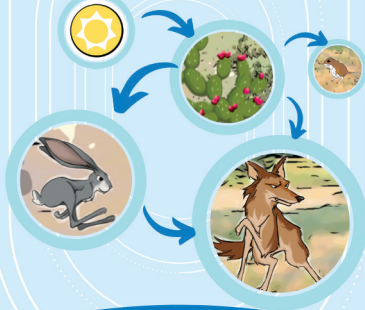
RIO BOSQUE



Web Deck

©2024 Lesson Destinations

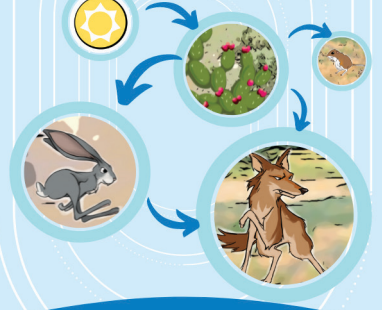
RIO BOSQUE



Web Deck

©2024 Lesson Destinations

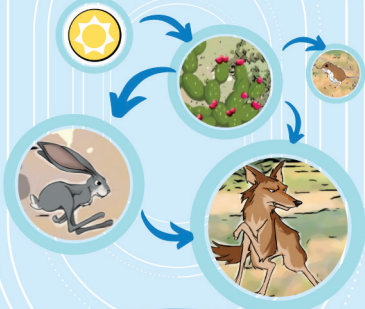
RIO BOSQUE



Web Deck

©2024 Lesson Destinations

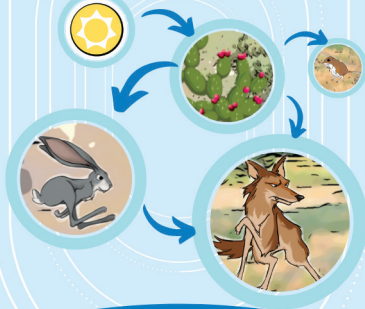
RIO BOSQUE



Web Deck

©2024 Lesson Destinations

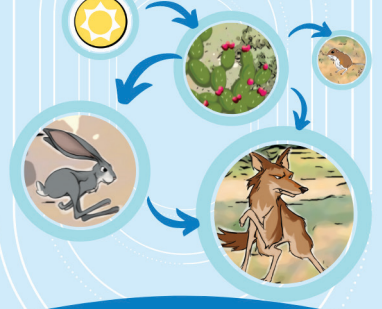
RIO BOSQUE



Web Deck

©2024 Lesson Destinations

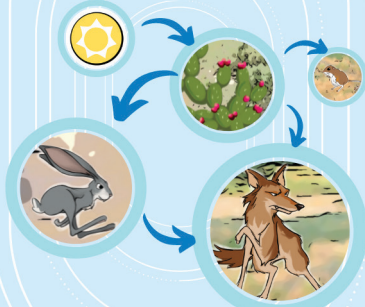
RIO BOSQUE



Web Deck

©2024 Lesson Destinations

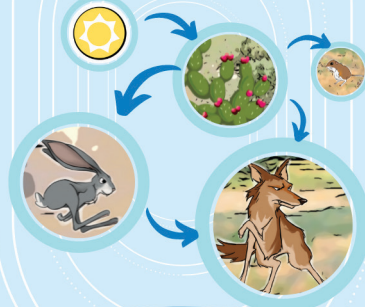
RIO BOSQUE



Web Deck

©2024 Lesson Destinations

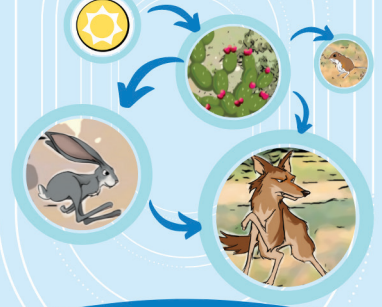
RIO BOSQUE



Web Deck

©2024 Lesson Destinations

RIO BOSQUE



Web Deck

©2024 Lesson Destinations